

# BACCHUS

restaurant & lounge

## FALL DOWN THE RABBIT HOLE TO Bacchus' Enchanted Tea Party

Saturdays & Sundays, June 13<sup>th</sup>, 2026 to September 13<sup>th</sup>, 2026  
\$75 Per Person Prepaid | First Seating at 2:30pm | Last Seating at 3:00pm  
Exclusively in our Dining Room | Two-Hour Seating Time

### Confections

Petit Unbirthday Cake | Red Velvet Cake, Cream Cheese, Raspberry  
Queen of Hearts Lemon Tart with Strawberry Candy Merengue  
Pistachi-Oh! Profiteroles with Mango Lime Compote  
Curiouser & Curiouser Coconut Guava Panna Cotta  
Mad Hatter's Macaron

### Scrumptious Scones

White Rabbits White Cheddar Cheese and Sundried  
Tomatoes Scones with Oregano  
Cheshire's Coconut and Apricot Scones

### Late for Lunch Sandwiches

Grilled Eggplant, Artichoke, Balsamic, Arugula  
Coronation Chicken  
Cucumber & Herbed Cream Cheese

### Eat Me I'm Savory

Tweedledum & Tweedledee Tuna Tart  
Topsy-Turvy Mushroom Quiche  
Dreamy Devilled Eggs

### Drink Me & Enhance Your Tea

Enjoy all the delights of our Enchanted Afternoon Tea with the choice of...

Tantalus x Wedgewood Blanc de Noir, 2021 | **24 (gls), 105 (btl)**  
Prosecco DOCG Brut 'Asolo', Giusti, Italy | **16.50 (gls), 72 (btl)**  
Taittinger 'Brut Reserve', Champagne, France | **38 (gls), 165 (btl)**  
Moët & Chandon 'Imperial' Brut, Champagne, France | **125 (half btl), 175 (btl)**  
Kir Royale | **18 (gls)**

### Local West Coast Oysters (GF) | 6 for 26 | 12 for 50

Classic Mignonette & Cocktail Sauce

### Kaviari® Caviar

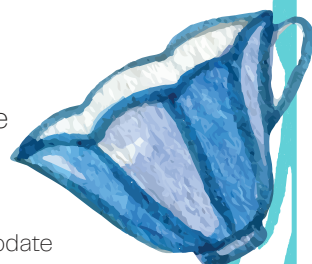
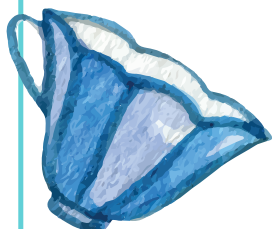
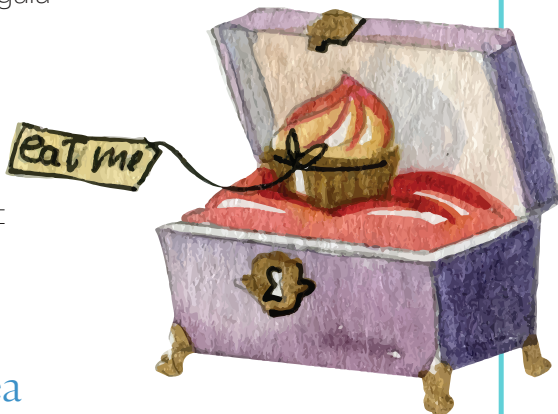
#### Transmontanus | 150 Kristal | 175

20g of your selection, traditional accompaniments:  
Blinis, Potato Rosti, Chives, Shallots, Egg White, Egg Yolk, Crème Fraîche

*Pastry Chef | Samson Iza-Fellows*

Requests for modifications are politely declined. We regret that we are unable to accommodate  
Gluten or Dairy Free allergies at this time. Please be aware that any seafood allergies or  
vegetarian requests must be submitted a week in advance | Consuming raw or undercooked  
meats, seafood, shellfish, or eggs may increase risk of foodborne illness

(GF) Gluten Free (V) Vegetarian (N) Contains Nuts





# Time for Tealeaves?

## SEASONAL BLENDS

### Seasonal Blend of the Week

Please Ask Your Server For  
Details on This Week's  
Seasonal Blend

### Mad Hatter's Tea Party

**Aroma** | Sweet & Fruity  
**Palate** | Approachable Sweetness  
**Purpose** | Head Down the Rabbit Hole

## TRADITIONAL BLACK TEA BLENDS

### English Breakfast (Decaf Available)

**Aroma** | Rich & Biscuity  
**Palate** | Full-Bodied & Clean  
**Purpose** | Seize the Day Boldly

### Lavender Earl Grey

**Aroma** | Floral & Spicy  
**Palate** | Expressive, Opulent  
**Purpose** | Stress Relief, Mood Boost

### Shanghai Rose

**Aroma** | Floral Rose, Slight Nuttiness  
**Palate** | Medium Body, Lychee Overtones  
**Purpose** | Sweet Romance

### Osmanthus Flower

**Aroma** | Luscious, Velvety Apricot  
**Palate** | Sophisticated, Pronounced Sweetness  
**Purpose** | Savor The Exquisite

## HERBAL INFUSIONS

### Harmony

**Aroma** | Fresh & Spicy  
**Palate** | Mint Balanced with Spice  
**Purpose** | Balance the Body

### Organic Peppermint Leaves

**Aroma** | Refreshing & Minty  
**Palate** | Vibrant, Saturated Mint  
**Purpose** | Aromatherapy in a Teapot

### Lemon Verbena

**Aroma** | Soothing & Mellow  
**Palate** | Delicate, Minty, Herbaceous  
**Purpose** | Tranquility

### Ginger Yuzu

**Aroma** | Citrusy & Stimulating  
**Palate** | Spicy & Invigorating  
**Purpose** | Gain Balance

### Himalayan Meadow Chamomile

**Aroma** | Fragrant Apple-Like Sweetness  
**Palate** | Slightly Herbaceous, Honey Overtones  
**Purpose** | Empower Remarkable Women

## SCENTED GREEN TEAS

### Organic Floral Jasmine Green Tea

**Aroma** | Intriguing, Sweet & Heady  
**Palate** | Delicate Structure, Soft  
**Purpose** | Fall in Love

### Gyokuro Asahi

**Aroma** | Fresh & Sweet  
**Palate** | Sophisticated, Finely Executed  
**Purpose** | Contemplation

This experience is \$75 per person pre-paid. Taxes, and gratuity not included food, beverage and related charges are subject to 5% GST, Alcoholic beverages are subject to an additional 10% PST. All items subject to change without notice.

